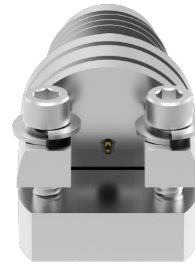




Common Interface  
ELF50



Narrow Profile  
ELF50-001



Standard Profile  
ELF50-002

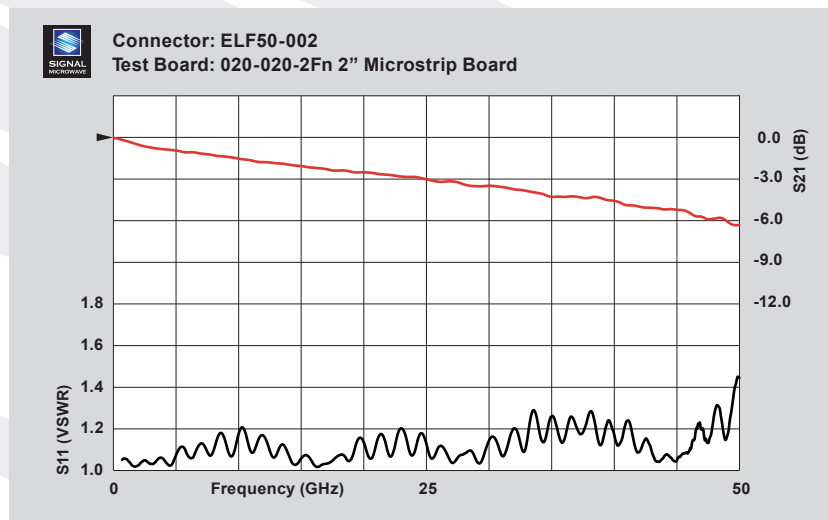
# Signal Microwave ELF50

## 2.40 mm Edge Launch Connectors for the Digital Industry

**ELF50-001** (Narrow Profile) to more tightly couple differential lines on curved edges

**ELF50-002** (Standard Profile) to use instead of current high priced offerings. Both Models have the same launch geometry and internal construction.

- 2.40 mm Interface
- Top Ground Only
- 50 GHz Bandwidth
- Board Design Support Available
- Edge Launch
- Test Boards Available
- No Soldering Required



2" microstrip test board with typical data through 50 GHz

